

# Step by Step : SQL Account or Payroll – Network Setting

## Server PC Setting

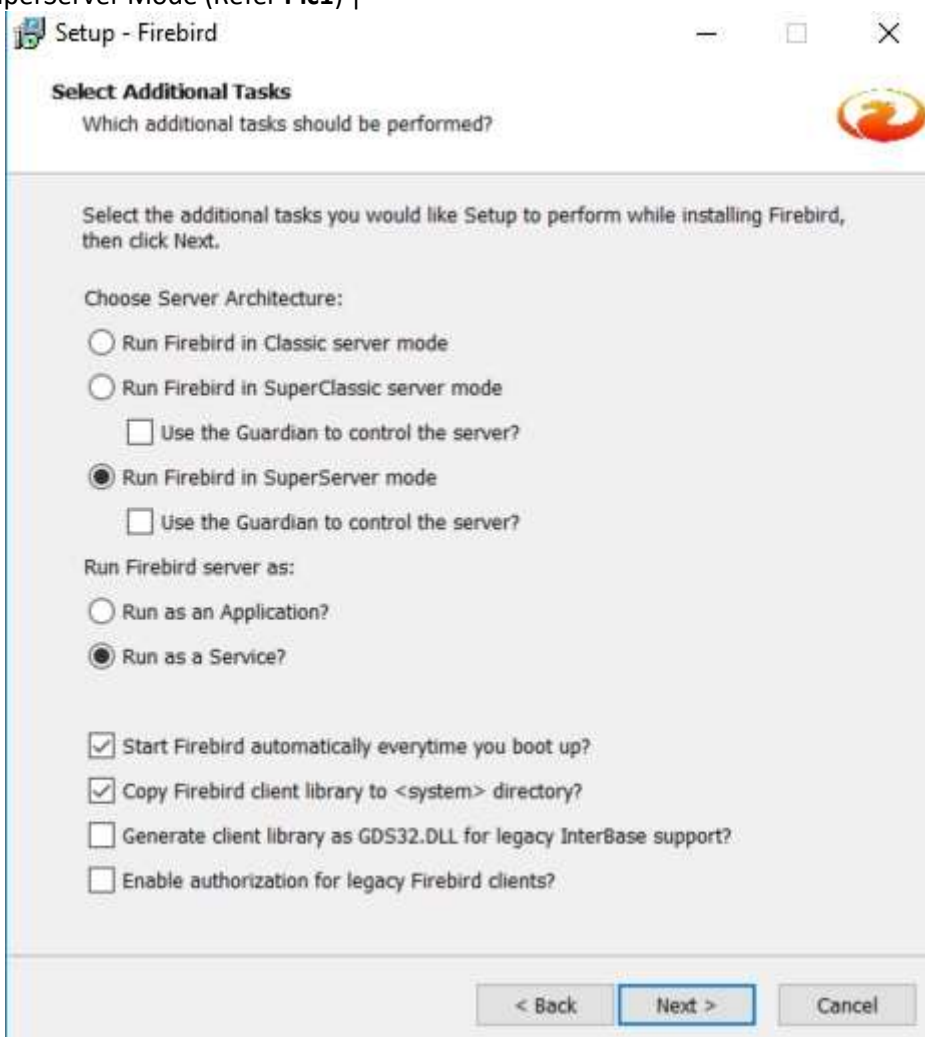
### 1 Session 1 : Install Firebird Version

Visit <http://www.sql.com.my/support/downloads> to download firebird version.

1.1 Install Firebird 3.0 version or higher. If Window System Type is 64 Bits, please download Firebird 3.0- 64 Bits

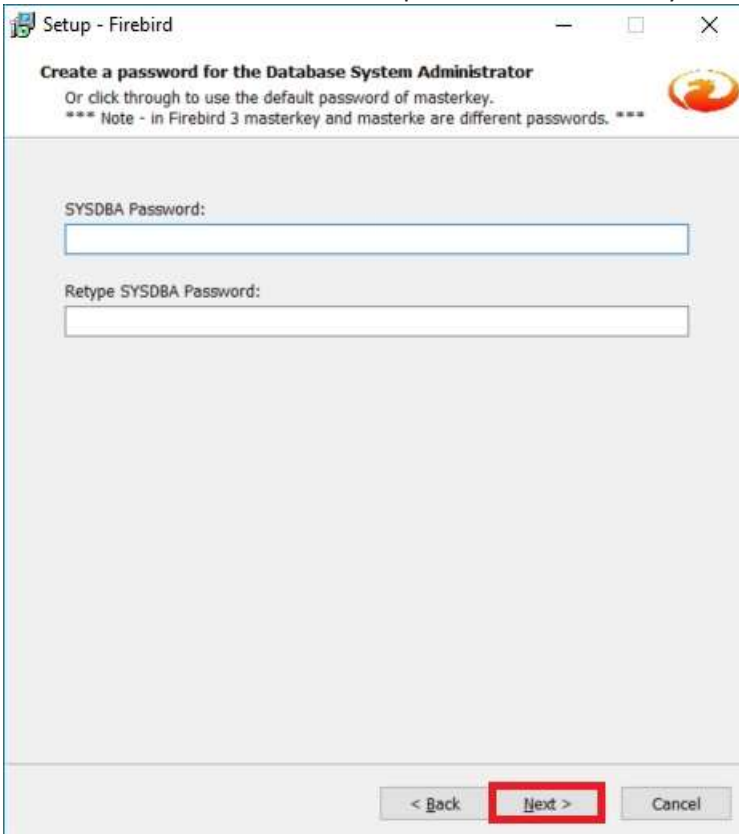


1.2 Run Firebird setup | Press Ok | Select I accept the agreement | Click 5 times Next | Make sure it is Run Firebird in SuperServer Mode (Refer Pic1) |



Pic 1

1.3 : Leave it blank to use default password of masterkey.



1.4 Click on Next | Install | Next | Finish to complete

## 2 Session 2 : Window Firewall

2.1 Control Panel | Window Firewall | Advanced Settings | Inbound Rules | New Rules |

2.2 Select Port | Next | TCP | Specific Local Port = 3050 | Next | Next | Next |

2.3 Name = Firebird | Finish

## 3 Session 3 : Network and Sharing Center

3.1 Control Panel | Network and Sharing Center | Change Advanced sharing Settings |

3.2 Network Discovery

- turn on Network Discovery

File and Printer Sharing

- Turn on sharing so anyone with network access can read and write files in the public folders

Public Folder Sharing

- Turn on Sharing so anyone with network access can read and write files in the Public folders

File Sharing Connection

- Use 128-bit encryption to help protect file sharing connections(recommended)

Password protected Sharing

- Turn off password protected Sharing

## 4 Session 4 : Share the SQL Account or Payroll Folder

4.1 My Computer | Go to C:\eStream\SQLAccounting\Share or Go to C:\eStream\SQL Payroll\Share | Right Click | Properties | Sharing Tab | Advanced Sharing | Tick Share this Folder | Click Permissions | Tick Full Control | Press OK | Ok |

4.2 Click on Security Tab | Click Advanced | Click on Change Permissions | Click Add Button | At empty Box enter : Everyone | Press OK | Tick Allow Full Control | Press OK | OK | OK | OK

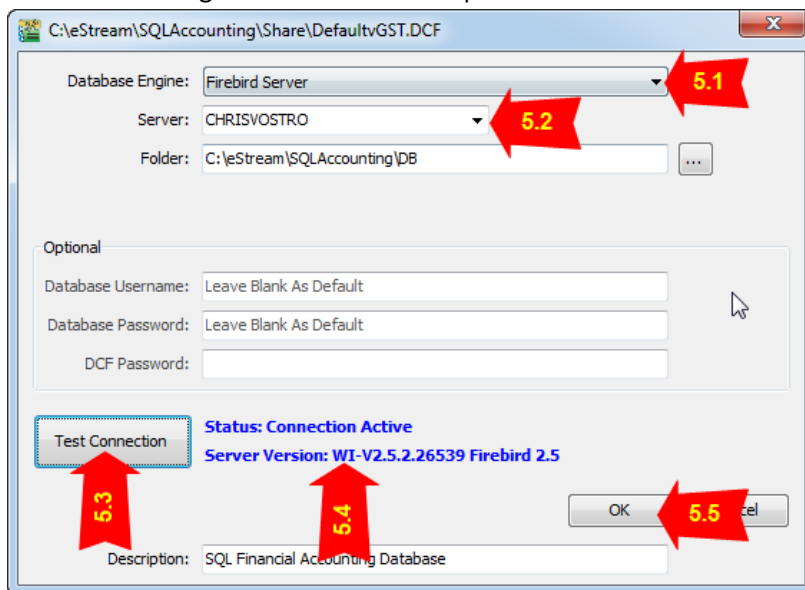
## 5 Session 5 : Install SQL Account or Payroll

5.1 Run SQL Account or Payroll Setup | Click Next | Choose I Select the Agreement | Click Next |

5.2 Amend to C:\eStream\SQLAccounting or C:\eStream\SQL Payroll | Click Next | 3 times | Install | Click Finish

5.3 Create Group | Click DCF Group | Click save Button

5.4 Database Engine = Firebird Server | Click Test Connection. If the status shown in blue color, press OK (Refer Pic3)



Pic 3

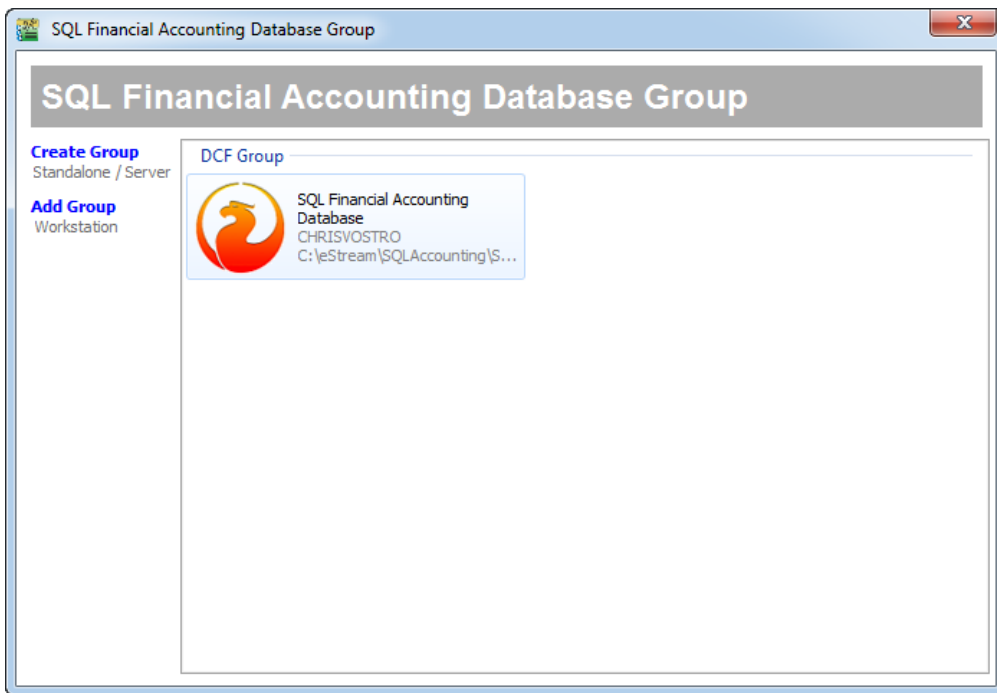
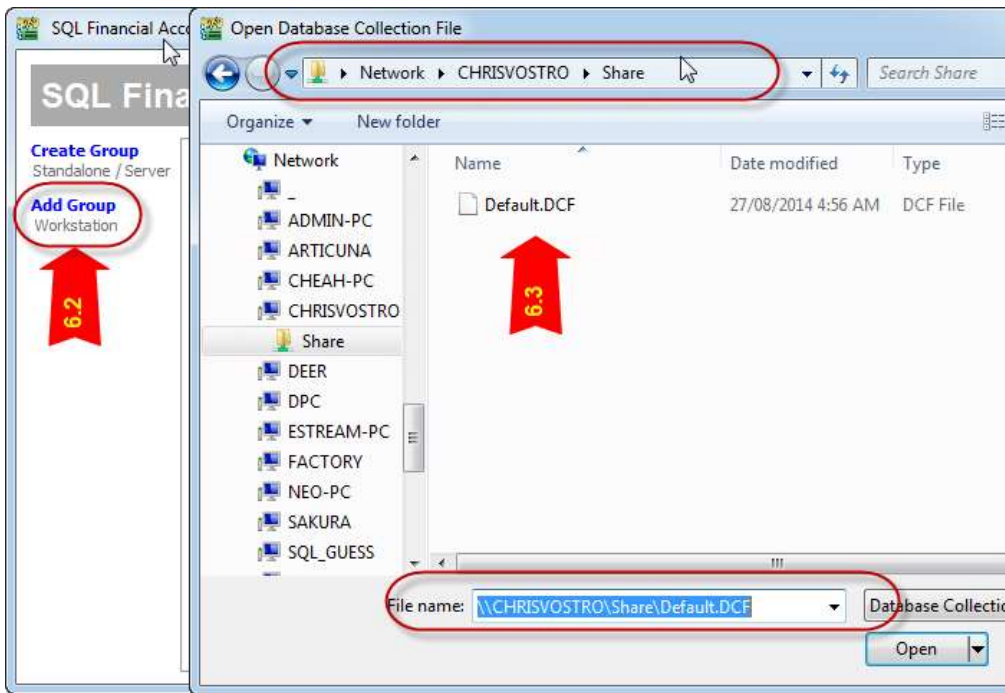
- Please take note of antivirus program. Have to add exception at Firewall

## 6 Session 6 : Client PC Setting

6.1 Run SQL Account or Payroll Setup | Click Next | Choose I Select the Agreement | Click Next 4 times | Install | Click Finish

6.2 Add Group | Click DCF File

6.3 Select Share folder (At Session 4) | Select Default DCF



6.4 Click on Firebird icon and Logon as usual.